

Tissue Section Bath (Round) Digital - LED User Manual

JAW-0200-00A

Power Supply/Rating: Dual Voltage:
220 - 240V or 110-120V 50-60 Hz AC / 500 Watts



Contents

General Notes	3
Specimen Safety	3
User Safety	4
Power Lead and Connection to Electrical Supply	4
Specification	5
Location	5
LED Lighting Rig	5
Operating Instructions	6
Cleaning Instructions	7
Miniature Circuit Breakers	7
Latching Safety Cut Out	7
Portable Appliance Testing	7
Warranty Terms and Conditions	8
Warranty Terms and Conditions Cont	9
Non Warranty Information	9
EC Declaration of Conformity	10
Routine Inspection Recommendations	11
Optional Equipment	11
Other CellTec Equipment Available	12
Wiring Diagram	13
Spare Parts List	14

Dear Customer,

Thank you for purchasing this piece of CellTec laboratory equipment. To get the best performance from your equipment and for your own safety please read these instructions carefully before use.

General Notes

1. This product is designed for laboratory use only. Always follow good laboratory practice.
2. If this product is not used in accordance with these instructions then basic safety protection may be affected.
3. The mains supply cord fitted to this product is heat resistant and should be replaced with an equivalent type.
4. Before using any cleaning or decontamination method please refer to the Maintenance and Cleaning section to ensure the proposed method will not damage the unit.
5. Connect only to a power supply with the corresponding voltage to that specified on the rating label positioned on the rear of the unit.
6. Ensure that the power supply has an earth (ground) terminal.

Specimen Safety

It is the users responsibility, to ensure that the temperature set on the instrument, is at a level where no damage is caused to diagnostic specimens used with the equipment. In the event of this instrument malfunctioning, all specimens within the device should be checked to ensure no harm or damage to the specimen has been caused.

Amendments

Issue 1: October 2015 (Initial Issue)

Symbols



This symbol appears in documents and on equipment to warn the user that there are hot surfaces on the equipment.



This symbol appears in documents and on equipment to warn the user that instructions must be followed to ensure correct or safe operation.

User Safety

The equipment you have purchased complies with the following European Directives EMC Directive 89/336/EEC and Low Voltage Directive 73/23/EEC as indicated in the EC Declaration of Conformity included in the document. This instrument has been designed and constructed in a manner which minimises the risk of electrical shock to the operator, offers maximum protection from overheating and provides clear and adequate labelling of instrument controls.

The instrument requires no regular servicing, but CellPath Ltd do recommend an annual inspection, as detailed in the manual which will prolong the life of the instrument to ensure continued safety.



Do not touch any electrical contacts or open any closure plates.
RISK OF ELECTRIC SHOCK!!

DO NOT:

1. Use for heating organic or corrosive fluids.
2. Operate without water in the bowl.
3. Use metal instruments or scouring agents to clean the bowl.
4. Over or under-fill the section bath. The recommended water level to be within 25mm of the bottom of the bowl and 10mm from the top of the bowl.
5. Pour water away from the control panel.
6. Do not immerse in water.

Power Lead and Connection to Electrical Supply



Check the electrical supply is compatible with the rating label.
IF IN DOUBT CONSULT AN ELECTRICIAN. THE PRODUCT MUST BE EARTHED!

Where the mains supply or plug connection differs refer to local regulations or consult an electrician.

Specification

The CellTec digital LED section bath is designed with both reliability and ease of use in mind. Digital temperature control accurately maintains water at a set temperature, which enables tissue sections be efficiently flattened prior to being picked up with a microscope slide. The LED illumination allows tissue samples to be seen easily.

The bath has generous space for a user to rest their hands when floating sections and an extra deep tapered bowl which allows slides to be dipped at any angle, without touching the bottom of the bowl. Stability is provided by four rubber feet and controls have been recessed to provide the user with an added measure of safety. The bath also features additional safety features such as an over temperature cut out and miniature circuit breakers.

Dimensions: Width 295mm x Depth 370mm x Height 135mm

Bowl: Diameter 220mm x Height 90mm

Weight: 4.5Kgs

Temperature range: 30°C to 70°C

Digital display: +/- 1°C

Safety: Class I cut out

Heater power: 400 watts

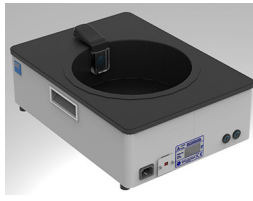
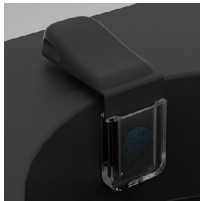
Power Supply: Dual Voltage 220-240V or 110-120V 50/60Hz

Location

The product must be placed on a smooth, level and sturdy work surface. Suitable for use in ambient temperatures 5°C to 40°C with a maximum humidity 80% (temperature 31°C) decreasing to 50% (temperature 40°C).

LED Lighting Rig

1. Insert the jack plug into the LED rig connection point.
2. If the LED lighting rig is not fitted please ensure the rubber safety plug is fitted to the LED rig connection point when filling or emptying water from the bath.



Operating Instructions

1. Fill the bowl of the Tissue Section Bath with distilled water. The recommended water level to be within 25mm of the bottom of the bowl and 10mm from the top of the bowl.



Do not allow the bath to run dry.

2. Connect the mains plug to the electrical supply and switch on. (Ensure the power supply is properly earthed).

3. Turn on the tissue section bath.

4. Select the desired temperature.



A. Press the DOWN arrow then release it (do not hold down DOWN arrow for 5 seconds).

B. The display will show SPI alternating between the current set temperature.

C. To change the set temperature press the UP key to increase the value or the DOWN key to decrease it. These keys increase or decrease the value one degree at a time, but if the button is pressed for more than one second the value increases/ decreases rapidly, and after two seconds pressed, the speed increases even more to allow the desired values to be reached rapidly.

D. Exiting the Set mode is achieved by pressing the P key or automatically if no key is pressed for 15 seconds. After that time the display returns to the normal function mode.

5. The heater indicator will illuminate to show heater activity.

6. The instrument will then warm up to the desired temperature, you will observe the temperature rise on the display.

7. The instrument is designed to warm up quickly and should reach working temperature in roughly 30 minutes.

8. Use the variable dimmer controls to adjust the white and blue LED brightness.

Cleaning Instructions

1. The lower case work of the tissue section bath, including the control panel, may be wiped using small quantities of mild detergent or polishes applied with a soft cloth.
2. The bowl should be emptied and refilled with clean distilled water at the end of each working day.
3. The bowl will require cleaning at regular intervals, using a minimal quantity of mild detergent applied with a soft cloth and then allowed to dry.
4. The LED plugin device can be removed for cleaning using a soft cloth. Replace the jack socket cap to prevent an ingress of water.

WARNING:



SCOURING PADS OR DE-SCALING AGENTS MUST NOT BE USED TO CLEAN THIS INSTRUMENT.

Miniature Circuit Breakers

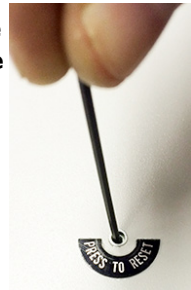
Located on the rear of the bath. In the event of a fault, push back in to reset. If fault situation continues, please contact your Service Engineer or CellPath Ltd.

Latching Safety Cut Out



Disconnect from electrical supply before continuing. Always investigate the cause reason for safety device operation.

Located on the underside of the unit is a small hole labelled “push to reset”. Insert a small diameter allen key into the hole until it touches. Press and the device is reset.



Portable Appliance Testing

Portable appliance testing should be carried out by a qualified person.



**DO NOT PAT TEST THE BATH UNLESS IT CONTAINS WATER!
THIS EQUIPMENT MUST NOT BE FLASH TESTED!**

Warranty Terms and Conditions

1. CellPath Ltd warrants to the Customer that the product purchased is free from defects in materials and workmanship.
2. Provided the terms of payment are duly complied with, CellPath Ltd undertakes to remedy any original defects arising from faulty materials or workmanship, in any goods manufactured/supplied by CellPath Ltd, which under proper and normal conditions of use, may develop within a period of twelve months from the date of delivery.
3. In the case of components which by their nature of application have an unpredictable life, this guarantee shall only be to the extent of the guarantee given by the manufacturers of these articles.
4. CellPath Ltd will accept no liability, where in the opinion of the company the defect has been caused by damage due to the Customers failure to follow operating instructions, correct installation, wear and tear, or damage due to the use of spare parts other than those spare parts of CellPath Ltd or which are recommended by CellPath Ltd, the defect has been caused by alterations or repairs being undertaken by a person(s) other than an authorised representative of CellPath Ltd.
5. Any damage claim must be in writing, and give the serial number and description of the goods, order number and date of delivery, and will not apply where any names or serial numbers or other information which may be attached to or inscribed upon the goods have been removed, covered up or defaced in any way.
6. Any goods or parts thereof, which may require repair or replacement, shall be repaired or replaced (at the election of CellPath Ltd) at the works of CellPath Ltd. The product to be repaired shall be delivered carriage paid back to CellPath Ltd by the customer at the Customer's risk and expense. Any such goods or parts will be delivered by CellPath Ltd to the Customer free within the United Kingdom but if required to be borne by the Customer. All faulty parts removed from the equipment will become CellPath Ltd's property. Any other repairs or work by CellPath Ltd will be carried out under the terms and conditions for specialist engineers currently in force.
7. In the event of replacement with a new or reconditioned model, the replacement unit will continue the warranty period of the original equipment.
8. If any goods or parts thereof are returned unnecessarily all cost involved, including a charge for inspection, handling and the return carriage must be paid by the sender.

Warranty Terms and Conditions Cont...

9. Please retain the original packaging over the warranty period.

10. CellPath offer an Extended Warranty Option for instruments in the CellTec equipment range. This includes all parts and labour (exceptions may apply dependent upon the type of equipment) and supply a swap out instrument whilst the customers equipment is repaired.

The extended warranty is only available at the date of purchase of the equipment. The warranty is immediately upgraded to a “swap out” service and is increased to 24 or 36 months depending on how long the warranty is extended for.

The “swap out” service covers a loan unit being sent to the customer whilst the faulty unit is returned for repair (or replacement if necessary). A response to a customer request will normally be within 24 hours.

If equipment is returned and the fault is found to be due to misuse or abuse, this falls outside the terms of the extended warranty and therefore a quotation for the inspection and repair of the equipment will be issued prior to any work being carried out.

On return of the repaired equipment to the customer, it is the customer's responsibility to ensure that the loan equipment is returned in the same condition as it was received and if required decontaminated with a signed decontamination sheet enclosed with the instrument.

It is the customers responsibility to ensure that the loan equipment is packed in the packaging provided by CellPath Ltd, in order that CellPath Ltd can arrange collection of the loan instrument. If the loan instrument is not packed and ready for collection within 48 hours of a repaired instrument being returned to the customer, costs for collection and equipment rental fee will be applied.

Non Warranty Information:

Spare parts shall be made available for a period of 5 years after a piece of equipment is discontinued.

CellPath Ltd
80 Mochdre Enterprise Park
Newtown, Powys, SY16 4LE
United Kingdom



EC Declaration of Conformity

We herewith confirm the following products:

Tissue Section Bath - Digital LED - JAW-0200-00A

Conforms with requirements outlined by the following European Directives:

Low Voltage Directive 2006/95/EEC

EMC Directive 2004/108/EEC

We confirm the declaration:

Nickel Electro Limited

Oldmixon Crescent

Weston Super Mare

North Somerset

BS24 9BL

United Kingdom

Conforms with the requirements of the following standards:

BS EN 61010:1

BS EN 61010:2.010

Safety requirements for electrical equipment for measurement, control and laboratory use.

BS EN 61326

Electrical equipment for measurement control and laboratory use - EMC requirements.

Routine Inspection Recommendations:

CellPath Ltd recommend that a simple annual inspection be made for all CellTec laboratory equipment in order that any malfunction can be identified and rectified as early as possible. This is to ensure user safety and prolong instrument life span.

Recommended checks to be made:

1. Condition of Power Lead.

A visual inspection to ensure the insulation is not damaged and that the correct fuse is fitted.

2. Functioning of Heater On Lamp.

Heater lamp should be on when the instrument is warming up.

3. Condition of the Bowl.

Surface of the bowl should be free of scratches and dents.

Optional Equipment:

Part Number: JAV-0200-00L, Product Description: Tissue Section Bath (Digital LED)
- Lid (Round)

Cellpath recommends the routine use of a calibrated digital thermometer such as the Therma Elite Thermometer to confirm that tissue section baths in their laboratory are operating within specification.

Part Number: JAA-0100-00A

Product Description: Therma Elite Thermometer (Control Unit)



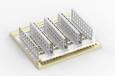










Part Number: JAA-2000-00A

Product Description: Therma Elite Penetration Temperature Probe (Liquids and Solids)

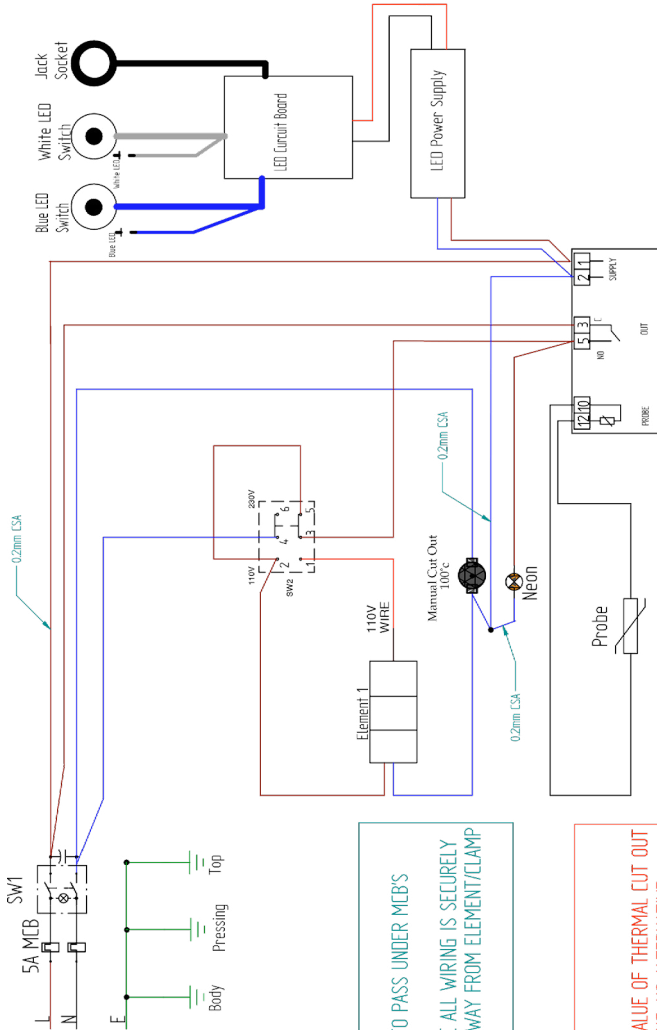
Part Number: JAA-0200-00A

Product Description: UKAS Calibration Certificate for Therma Elite Thermometer and Probe

Other CellTec Equipment Available:

Part No.	Description	
JAX-0300-00A	Mini Section Dryer – UK/EU Plug <i>Power Supply/ Rating: 230V 50/60Hz AC/400 Watts</i>	
JAX-0300-00B	LEAN Timer Head 1-4 Slide Racks <i>Power Supply: 4x AAA Batteries</i>	
JAX-0300-00C	Slide Rack Holder/ Identifier (Capacity 4 Slide Racks)	
JAY-0100-00A	Slimline Slide Drying Hotplate – UK/EU/USA Plug <i>Power Supply/ Rating: 110/230V 50/60Hz AC/400 Watts</i>	
JAY-0100-00AL	Slimline Slide Drying Hotplate - Lid	
JAZ-0200-00A	Block Trimmer Plus – UK/EU/USA Plug <i>Power Supply/ Rating: 110/230V 50/60Hz AC/250 Watts</i>	
JAU-0100-00A	Slimline Wax Dispenser – UK/EU/USA Plug <i>Power Supply/ Rating: 110/230V 50/60Hz AC/460 Watts</i>	
GZG-0100-00A	CellCeps Plus Heated Forceps System - Serrated Forceps 1x 1mm & 1x 2mm (Control Box + Power Supply)	
GZI-0100-00A	CellCeps Plus Heated Forceps System - Smooth Forceps 1x 1mm & 1x 2mm (Control Box + Power Supply)	
JAX-0400-00A	High Capacity Section Dryer – UK/EU Plug <i>Power Supply/ Rating: 230V 50/60Hz AC/800 Watts</i>	
JAX-0400-00B	LEAN Timer Head, Slide Racks 1-4 <i>Power Supply: 4x AAA Batteries</i>	
JAX-0400-00C	LEAN Timer Head, Slide Racks 5-8 <i>Power Supply: 4x AAA Batteries</i>	
JAX-0400-00D	Slide Rack Holder/ Identifier (Capacity 8 Slide Racks)	

Wiring Diagram

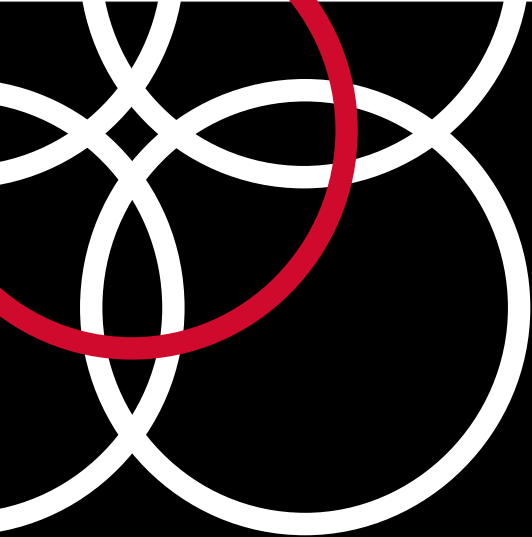


NOTE
 LOOM TO PASS UNDER MCB'S
 ENSURE ALL WIRING IS SECURELY
 HELD AWAY FROM ELEMENT/CLAMP
 PLATE

SAFETY CRITICAL NOTE
 CHECK TEMPERATURE VALUE OF THERMAL CUT OUT
 IS 100°C BEFORE FITTING. NO ALTERNATIVE
 VALUE IS ACCEPTABLE

Spare Parts List

Description	Part Number	Quantity Required
Temperature Controller	JBA-EX1175-00A	1 off required
Power Entry Module	JBA-EX1151-00A	1 off required
5 Amp Circuit Breaker	JBA-EX1212-63A	2 off required
Voltage Selector	JBA- ES0968-00A	1 off required
Neon Amber and Tags	JBA-EL0100-00A	1 off required
Mains Switch Small	JBA-ES0272-00A	1 off required
Temperature Sensor	JBA-ET1160-00A	1 off required
Thermal Cut Out 100°C	JBA-EH1242-00A	1 off required
Element 400W Dual Voltage	JBA-EE1198-00A	1 off required
LED Light Assembly	JBA-SA02044-LED-00A	1 off required



CellPath Ltd.
80 Mochdre Enterprise Park,
Newtown, Powys,
SY16 4LE, Mid Wales, UK

Tel: +44 (0) 1686 611 333
Fax: +44 (0) 1686 622 946
Email: sales@cellpath.co.uk
Internet: www.cellpath.co.uk